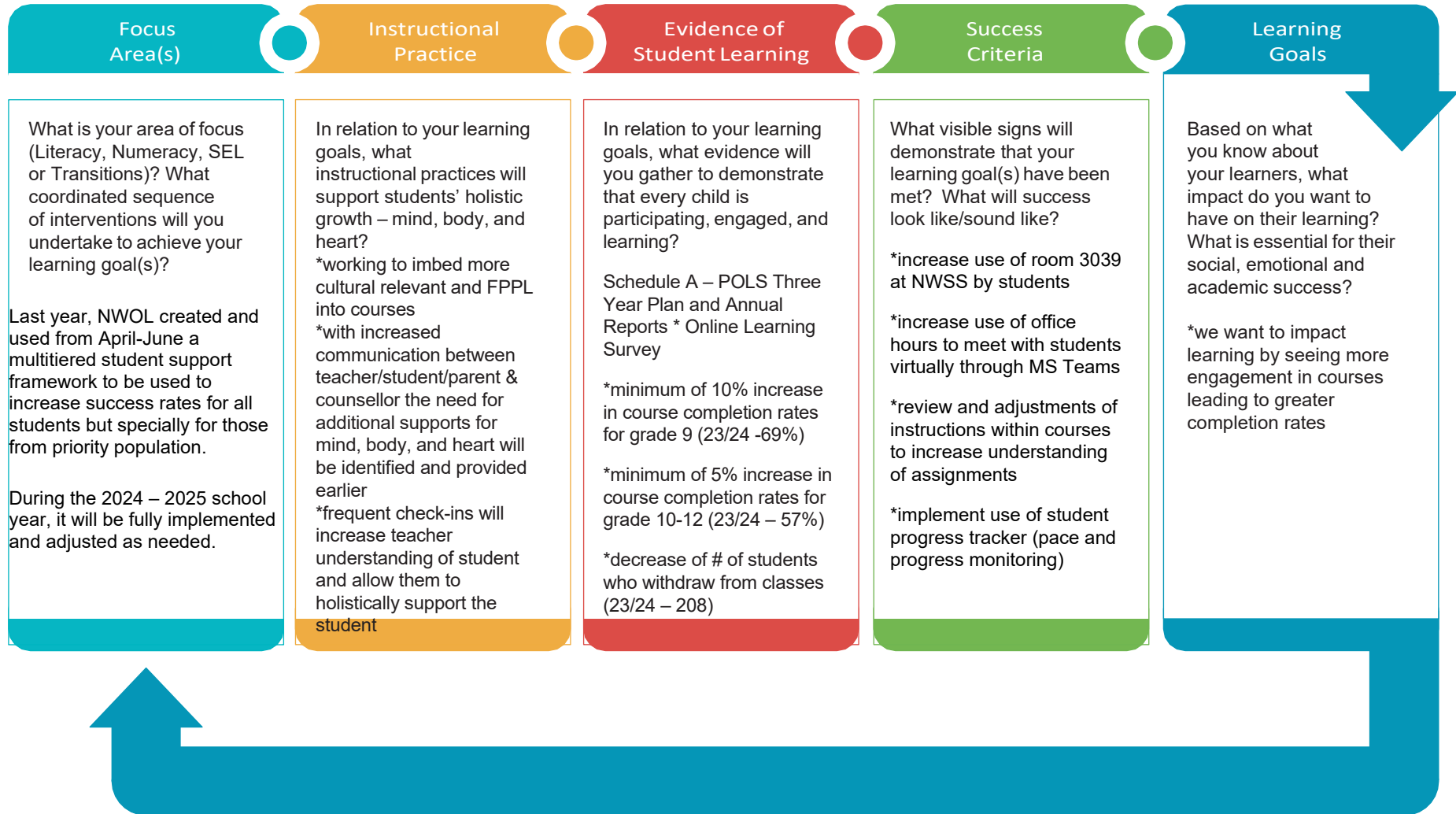


SCHOOL PLANNING TOOL



LEARNING – Learning is relational and inclusive. Every child and youth receive what they need to develop their full academic and social potential. The learning expectations are high and appropriate for all students. Educators are sensitive and responsive to individual and group differences.

STRUCTURES – Structures are designed with intention. They are learner-centered, social and encourage the learner's active engagement. Educators design learning environments that are affirming of diverse learners' identities & abilities. Structures are established to engage in student-focused conversations with emphasis on knowing & understanding individual students.

TOOLS – Digital and non-digital tools and resources reduce barriers to learning; promote equitable access; take into consideration the interests of students; and deepen knowledge and understanding of Indigenous history, traditions and culture.